

Land Stewardship Proposal for Fall River Valley Planning Unit

Collaborating Organizations

**Fee Title Holder: Fall River Resource Conservation District
Land Conservation Partner: Spring Rivers Foundation**

Contact Information

Primary Contact

First Name: Michael

Last Name: Millington

Title: Director, Fall River Resource Conservation District Board

Address: P.O. Box 207

City: Fall River Mills

State: CA

ZIP: 96028

Primary Telephone: (530) 336-5599

Secondary Telephone: (530) 604-1155

E-mail address: mjmillington602@yahoo.com

Secondary Contact

First Name: Bill

Last name: Buckman

Title: President Fall River Resource Conservation District

Address: 539-540 Pitville Road

City: McArthur

State: CA

ZIP: 96056

Primary Telephone: 530-336-666185

E-mail Address: c_buck333@yahoo.com

Administrative Assistant

First Name: Patty

Last Name: Betz

Title: Administrative Assistant, Fall River Resource Conservation District

Address: P. O. Box 83

City: McArthur

State: California

ZIP: 96056

Primary Telephone: 530-336-6591

E-mail Address: fallriverrcd@citlink.net

Executive Summary

The Fall River was once the premier wild trout fishery in the State of California. Sadly that is no longer the case and the fishery is in decline. The Fall River above Spring Creek Bridge was the most pristine section of the river. That too is no longer the case.

The Fall River Resource Conservation District has been active in restoration work involving the Fall River and Fall River Watershed for over ten years. The Fall River RCD just completed and published a watershed assessment and management plan for the Fall River through DWR funding. Fifteen stakeholder agencies and organizations participated in the assessment and management plan.

The majority of the goals and objectives of the management plan pertain to environmental protection and restoration efforts. Enhancing outdoor recreation opportunities is also included as an objective in the plan.

The Stewardship Council recommends developing a shoreline day use area on the northern edge of the Fall River Valley Planning Unit. The Stewardship Council envisions the day use area providing a place for anglers to come ashore and relax along the river, use a restroom, picnic and enjoy the river setting. The vision also includes walk in users from a small parking lot near McArthur Road.

Public input has made it clear that there are two different visions for this property. One vision is unfettered year round public access with a paved launch ramp for boat launching. The other vision is no access and high level of resource protection.

Taking into consideration the watershed management plan and the competing visions we will try to strike a balance that best serves the watershed and the community.

Existing Environmental Conditions

There is approximately ½ mile of shoreline along the north and east edge of the property. All of the shoreline is protected by a riparian buffer zone that is fenced to keep both cattle and human traffic from damaging the riverbank. The river is fairly narrow through most of the ½ mile (50 –70 feet in width).

Starting where the river transects the east section line and going up river for approximately .13 mile, the bank is best described as a high bank. The bank slopes to the river with varying degrees of steepness. Running almost the full length of this section is prime fisheries habitat. This section needs to remain protected from foot traffic and have some vegetation restoration to protect the

bank from erosion and depositing sediment into the river. This Section also is home to a Heron Rookery.

Continuing up river, the river runs along the east side of the property. The high bank continues upriver for approximately 520 feet. The principal vegetation in this stretch is oak trees.

At the 520 foot mark the bank transitions from high bank to flat bank. The primary vegetation in the transition area is willow trees. The bank flattens out to the point that marks where the river turns west. That section is mostly wiregrass and tule marsh. Because of the marsh conditions this section is not conducive to foot traffic and should remain protected.

Continuing upriver the last section is approximately .13 mile and borders the north boundary of the property. This section is in the best condition of all of the riverbank on the property. It is flat and covered with meadow grasses. There is a cattle watering ramp in this section directly over the gas pipeline.

Adjacent to the last section is an approximately 14 acre meadow that covers the north end of the property. This meadow is a seasonal wetland. Surrounding properties, including Soldier Mountain and the rest of the planning unit drain into this meadow. It is the last stop of part of the natural drainage system in the area and filters the water before it goes into the river. The meadow also filters tail water from adjacent pastures and keeps a portion of the meadow wet into the summer months.

Boat Access and Shoreline Day Use

After surveying the riverbank of the planning unit it is apparent that there is one section best suited for boat access. That is the northern most boundary of the property where the existing cattle ramp is located to approximately 100 yards down stream. Utilizing the existing cattle ramp, boats could be landed or launched.

However that same area is not suitable for a day use area. The riparian buffer zone is not recommended for picnic tables. Neither the riparian buffer zone nor the meadow is recommended for restrooms.

The distance from boat access at the cattle ramp to the parking lot would be over ½ mile. The parking lot is the most likely location for restrooms. "Boat-in Users" would have to walk ½ mile plus from the boat access to the restrooms. "Walk- in Users" would have to carry their boat over ½ mile plus from the parking lot to the boat access.

The only viable location for a Shoreline day use area is along the northern edge high bank area. This area is wooded and has been thinned allowing room for

picnic tables. This area has two main environmental concerns. One the Heron Rookery is right in the middle and two it would be very difficult to keep visitors off the environmentally sensitive high bank.

The high bank along this section of the river is prime fish habitat and one of the few if not the only high bank sections on Fall River.

There is an area on the high bank near the northeast corner boundary that has remnants of an old river access site. It may be possible to provide a boating access point at this site. However the environmental concerns would be the same as above.

There are several other possible locations for a day use area that would not impact on cultural or environmentally sensitive areas unfortunately they are not on the shoreline.

Parking Lot

Locating a small parking area near McArthur road on the eastside of the property is possible. It will require some engineering to cross the natural drainage areas that run parallel to the road. The actual parking lot will have to be several hundred yards into the wooded area again to avoid drainage areas and vernal pools. The parking lot would be the logical location for rest rooms as it would be far enough from the river.

Locating a small parking area on the westside of the property is also possible and presents less of an engineering problem, as there are less drainage problems. Getting from the westside to the eastside requires building a trail over the gas pipeline and will require PG&E permission.

Existing River Usage

Access to the Fall River by the public comes from the Rat Farm launch, Tule River launch or Cal Trout launch. All of those launches are down river of the Spring Creek Bridge.

The Fall River Valley Planning Unit is approximately 1.3 miles upriver from the Spring Creek Bridge. Depending on water surface elevation, the river is not passable by boat at the Spring Creek Bridge. At the time of this writing (7-23-2010) the bridge is not passable by boat because of high water surface elevation and low clearance at the Spring Creek Bridge.

We could not find an official record of number of days per fishing season that the Spring Creek Bridge was not passable. Anecdotaly from a fishing guide it is not passable by boat for approximately half the fishing season (Approximately 3 months out of 6 months).

Access from Cal Trout is limited to paddle boats or boats with electric motors. It is approximately 4.3 miles from Cal Trout to the FRVPU. That is about the limit of one battery.

Fishing guides, guests at commercial resorts and members of private clubs that have access to Fall River are also limited in travel on the river by the water level at Spring Creek Bridge. Fishermen in these categories are on the river to fly fish not picnic.

We believe there would be more “walk- in users” than “boat- in users” for this unit as long as there is boating access and a day use area along the shoreline. As cited above there is no good location for a shoreline day use area. Any boat access would be within FERC boundaries and subject to PG&E and FERC approval.

Based on our analysis of the actual environmental conditions, as they exist on the Fall River Valley Planning Unit and analysis of actual use of the river, providing a boating access and shoreline day use area will be difficult.

We would like to propose an alternative vision for the Fall River Valley Planning Unit as an “Outdoor Education Area”. This would allow use for scientific and educational purposes. The public access would be limited to day use with qualified guides. Approved organizations could reserve time for scientific and educational uses. It would also reduce the human footprint and environmental impact to the property and river.

As suggested in the potential measure for youth program activities, the south portion of the planning unit, which is a Timber Management Unit, can be used for classes in forestry, plant identification, and wildlife habitat. The north portion of the unit presents educational opportunities in range management, cultural resources and aquatic and terrestrial resources.

Our Proposal will focus on the challenges of a shoreline day use/ boat access vs. utilizing the unit as an Outdoor Education area.

Organization Information

Category: The Fall River Resource Conservation District is a Public entity.

Tax ID: 68-039005

Legal Name: Fall River Resource Conservation District

Common Name: Fall River RCD

Status Documentation: See attachment 1

Rationale for Applying

This parcel falls within the heart of the Fall River Conservation Districts boundaries. The Fall River RCD has been working with the communities surrounding these planning units for over ten years, developing watershed restoration plans and projects, forestry projects, and discussing recreational concerns.

The Fall River RCD manages resources by utilizing watershed management practices, which incorporate the relationship between land use, soil loss and productivity, water quantity and quality, wildlife populations and habitat, as well as the social and economic factors within a certain drainage basin.

Our organizational mission meshes seamlessly with the Beneficial Public Values identified by the Stewardship Council.

These planning units have long received responsible and productive use by the people of this region. Holding fee title by a local entity continues that tradition while insuring the protection of cultural resources, utilizing natural resources in a sustainable manner, and continuing public access and recreation activities.

Organization Mission

Fall River Resource Conservation District

As a grassroots, locally led organization, the Fall River RCD is committed to serving the needs of the community as well as the needs of the environment. This commitment is demonstrated by the following practices: (1) Provide strong leadership in the identification, management, and restoration of natural resource concerns, (2) Provide natural resource education to the community, (3) Assist landowners by holding and managing conservation easements.

In identifying and prioritizing conservation issues within the district, the Fall River RCD will use the tools and practices of watershed management. Watershed management incorporates the relationship between land use, soil loss and productivity, water quantity and quality, wildlife populations and habitat, as well as the social and economic factors within a certain drainage basin.

The Fall River RCD will assist landowners in the development of sustainable conservation on their property. Combined environmental and economic goals will encourage watershed protection, sustainable agriculture and forestry, and land management.

The Fall River RCD strives to include a youth education component in every project and partners with other agencies and organizations to provide conservation education.

Geographic Focus

The Fall River RCD was established in 1957 by the Shasta County Board of Supervisors. The district includes acreage in four counties:

Northwestern Lassen County	275,000 acres
Southwestern Modoc County	35,000 acres
Eastern Shasta County	644,000 acres
Southeastern Siskiyou County	195,000 acres

Directors of an RCD are required to reside in their District. As representatives of their community, directors have the responsibility to assess local conservation needs and to develop programs to meet those needs. Since its establishment, the Fall River RCD board of Directors has been comprised of directors with varied backgrounds and experience. Their experience includes agricultural practices, forestry, land management, knowledge of the local history and recreational opportunities in the district.

The RCD forms a Technical Advisory Committee (TAC) for each project. The TAC is made up of members of all interest groups and agencies that have an interest in the project. This insures input from all interested parties.

Organizational Experience and Capacity

Big Bear Flat Project funded by the U. S. Fish & Wildlife Service

The Big Bear Flat Restoration Project proposes to restore a degraded mountain meadow stream from its current entrenched state, reconnecting it hydrologic ally back to the meadow surface in a historic remnant channel. Native wet meadow habitats including aspen and riparian forests will be restored, as well as in-stream native trout and other aquatic species habitats. This project is the last restoration project in a series of water quality improvement projects in the Fall River watershed, and will not only benefit the mountain meadow habitats in the immediate vicinity, but will also improve water quality habitats downstream benefiting many aquatic species.

As with all FRRCD projects, the design is proposed and refined by a Technical Advisory Committee (TAC) to ensure technical integrity and feasibility, and that the objectives and concerns of all interested parties are met or addressed. The project encompasses channel/meadow and grazing management components on Bear Creek. The construction phase of the project is expected to begin in the late summer of 2009 with completion by the fall of 2009.

Stream flow redirected, all pond and plug completed and rip rap placed in appropriate areas. Logging completed. One item left to complete (fencing) this spring.

Burney/Hat Creek Community Forest Project funded by Shasta RAC

To conceive, plan, and implement a community forest concept project in the Hat Creek and Burney Creek watersheds of Shasta County.

The primary objective of this project is to build on existing agency-stakeholder relations and use examples of successful collaborations in other areas to develop a local model that will facilitate long-term, multiple-ownership, sustained management to provide ecosystem services in the Burney Creek and Hat Creek watersheds. The project relies on the identification of primary issues, active involvement by communities and other stakeholders, and cooperation by the USFS and large landowners to implement a landscape-scale ecosystem and socioeconomic forest and watershed management plan.

Goals

1. Determine the reasons for economic depression in the Burney and Hat Creek watershed areas and identify possible enhancements to improve economic viability.
2. Use models of successful collaborations in other areas to develop a local model that will encourage removal of under story biomass and thinning of overstocked stands and the long-term sustained management of the forests in the area.
3. Develop a collaborative interaction between land managers to improve efficiency and understanding of management on all parcels to reduce duplication of efforts and improve cooperation and coordination of projects.
4. Implement land improvement projects to benefit natural resources, the economy, and people within the watershed and address future short-term impacts of global warming and climate change.
5. Identify and implement projects, actions, and alternatives that create jobs, stabilize the local economy, and stabilize U.S. Forest Service (USFS) payment to counties.
6. To use stewardship contracting and/or other similar tools to retain revenue in the community and to fund restoration projects identified in the watershed.
7. Create a framework applicable to other communities and watersheds.

As of May 2010 the socioeconomic studies have been completed and a Community Advisory Committee formed. The Community Advisory Committee has selected and recommended five projects to be funded through the Shasta Resource Advisory Committee grant process. The Fall River RCD is applying for that funding.

Fall River, Hat Creek and Burney Creek Watershed Assessment and Management Plan funded by Department of Water Resources.

The Fall River, Hat Creek and Burney Creek (Fall-Hat-Burney) Creek watersheds drain three tributary valleys to the Pit River. The surrounding watersheds provide

large tracts of commercial timberland and National Forest lands. The communities of Burney, McArthur, Hat Creek and Old Station are the primary centers of population, although rural residential uses are widely dispersed throughout the area. A plan is needed to assess current and potential issues and lay the groundwork for remedial and preventative management. Planning will provide for improved management of agricultural discharges, enhanced habitat quality, sustained hydroelectric production, and management of wildfire events.

The initial step will be to implement a process that informs the communities and increases their participation. Initial informational outreach will be conducted through press releases, newsletters, stakeholder meetings, and public meetings. A Technical Advisory Committee will provide oversight for the development and review of the Fall-Hat-Burney WMP. Various participating entities will provide leadership and additional participation from agencies, including the Regional Water Quality Control Board is expected. Most of the stakeholders expected to contribute currently work together as part of the Pit River Watershed Alliance (PRWA) that covers the geographic area upstream of the Fall River sub-watershed.

The grant funding was frozen in December 2008 due to the state budget crisis, but much of the original public scoping work was completed.

While waiting on a final decision regarding continuation of grant funding, the Fall River RCD has partnered with the United States Department of Agriculture's Agriculture Research Service and Natural Resource Conservation Service to utilize the collected data from the above project to develop a computer model of the Fall River, Hat Creek and Burney Creek watersheds. When completed this project will allow the entire watersheds conditions to be assessed from a laptop computer.

Because of the state budget cuts we were not able to complete all of the scientific work as originally planned. The actual assessments and management plans for all three watersheds were completed and published as of May 2010.

McArthur Swamp Planning Unit Divestiture Through the Stewardship Council

The Fall River Resource Conservation District, the Pit River Tribe, and Shasta Land Trust have submitted a plan as a collaborative proposal to the Stewardship Council for the McArthur Swamp Planning Unit. In this proposal, the Fall River RCD will hold fee title. The Pit River Tribe will be a partner through MOU or other appropriate legal means. Shasta Land Trust will hold the conservation easements for both the fee title lands and the PG&E retained lands.

On May 19th, 2010 the Stewardship Council Board of Directors voted to accept Staff's recommendation that the Fall River Resource Conservation District

receive fee title ownership of approximately 4724 acres of the 7663 acre McArthur Swamp Planning Unit. The remaining 2939 acres would be retained by PG&E.

Staff also selected Shasta Land Trust to hold the conservation easements over both the retained and donated lands. The process of developing the land management plan, demonstration project and real estate transactions are ongoing.

Organizational Finances

Financial statements see attachment two

The Fall River RCD is currently requesting grant funding from, Shasta Resource Advisory Committee, Lassen Resource Advisory Committee, US Fish & Wildlife, California Department of Food and Agriculture, Department of Conservation and Natural Resource Conservation service. We are currently receiving funding from some of these organizations and have received funding in the past from all of the listed sources.

It is the responsibility of our Watershed Coordinator to search for grants that meet our stated objectives in watershed management and protection, sustainable forestry and land management.

It is the responsibility of our Noxious Weed Coordinator to search for grants that allow us to maintain current weed programs and too expand those programs to meet the needs of the district.

It is the responsibility of our Administrative Assistant to search for grants that meet our stated goals in educational out reach and supporting Fire Safe Councils.

The Fall River Resource Conservation District will hold fee title. All lease revenue and any funding from the Stewardship Council for enhancements will be used solely on the donated land.

Key Personnel/Staff

The Fall River RCD currently employs an Administrative Assistant, a Noxious Weed Coordinator and a Watershed Coordinator.

The Administrative Assistant manages the day to day operations of the District office, transacts all bookkeeping and payroll functions, prepares financial reports and annual budgets and provides office support for Natural Resource Conservation Service staff. Additionally the Administrative Assistant writes

grants, supervises Fire Safe Council operations and represents the District at various community meetings.

The Noxious Weed Coordinator conducts land inspections to determine the presence of noxious weeds, does the actual spraying of the weeds and files the required reports. The NWC provides educational out reach to the public on noxious weeds, writes grants and assists in the supervision of fire safe projects.

The Watershed/Project Coordinator writes grants to obtain funding for the implementation of natural resource conservation projects that meet the goals and objectives of the District's watershed management plans. The WPC supervises and administers each grant and corresponding on the ground project. The WPC also assists with educational out reach and represents the District at community and inter agency meetings.

All Directors and Associate Directors are volunteer positions.

Resumes see attachment three

Community Engagement and Collaboration

Prior to formal Round One proceedings, the Fall River RCD met with individual owners of some of the adjacent properties to the Fall River Valley Planning Unit to solicit input on use of the property. Specifically the Fall River Ranch managing partner, the Fall River Ranch manager and cattle lessee and Dennis Jacobsen.

Through the series of donee meetings and public out reach meetings sponsored by the Stewardship Council, The Fall River RCD met with potential donees and discussed common and individual interests and listened to public comments.

Fall River RCD board meetings are public and progress of the process is reported at each meeting with information available for the press. As a result of information gained from public comment at our meetings, we made additional tours of the planning unit with members of Wild Trout Foundation, Fall River Conservancy, Spring Rivers Foundation and Directors of the RCD.

The public input was instrumental in illustrating the environmentally sensitive areas and issues. There is a definite division in desired use between total access and protecting the environment and health of the river.

Legal Compliance and Best Practices

Fall River Resource Conservation District

Division 9 of the California Public Resources Code defines the roles and responsibilities of RCD's as well as the directors selected to govern them. Division 9 also states that Resource Conservation Districts are legal subdivisions of the state and as such are not-for-profit entities. For the purpose of contracting

with state agencies only, resource conservation districts shall be considered agencies of the state.

The Fall River Resource Conservation District follows all Federal and State rules pertaining to hiring, purchasing, awarding of contracts, accounting practices, environmental practices and agricultural practices.

Financial matters are a permanent agenda item for every monthly meeting. Each director is provided with a current income and expense statement, a current net worth statement, and a list of accounts payable at each monthly meeting. The districts administrative assistant answers any financial questions. Accounts payable have to be authorized by approval of the board of directors. This system ensures that each director is aware of the financial state of the district on a current basis.

The Fall River RCD books are audited on an annual basis.

California Government Code sections 57451 C and 57457 (c) (1) describe the terms for dissolution of special districts. Should the Fall River RCD be dissolved, after payment of it's obligations, all remaining real property would be distributed to Shasta County.

The Fall River Resource Conservation District is not in violation of any law.

Conflict of Interest Disclosure

Fall River RCD has no knowledge of any conflict of interests in this matter.

Land Interests Sought

The Fall River Resource Conservation District is seeking fee title of the Fall River Valley Planning Unit parcel identified in the background hand out as ID# 181. This parcel is approximately 137 acres.

The Fall River RCD is not seeking fee title to Parcels 182, 183, and 184. These parcels are surrounded by private lands and do not have public access.

The Fall River RCD Board of Directors authorized the preparation and submittal of this Land Stewardship Proposal, and assigned a specific director to oversee the process. The proposal is an agenda item for each board meeting and progress and content are discussed.

If the RCD is selected as the donee for fee title, the board of directors will assign a specific director to complete the transactions to the point of signing the documents. The Board will then vote authorizing the President of the Board to sign the final documents.

Baseline and Enhanced Land Management

Shoreline Day Use and Boat Access

The Shasta County Planning Department said that the Fall River Valley Planning Unit would have to be rezoned in order to put in a shoreline day use area and boat access. The process would require a General Plan Amendment, a zone change to Public Facility Zone and obtaining a use permit.

PG&E will not allow a boat launch (ramp) on the FERC controlled portion of the riverbank. They may allow a floating dock.

California Department of Fish & Game may require a 1603 permit for riverbank alteration to facilitate a floating boat dock.

The above three factors are all unknowns and can't be known until a plan is submitted. Denial of any one of the factors will negate boat access.

The Shasta County Building Department stated that all facilities would have to comply with the Americans with Disabilities Act (ADA). That includes parking lot, toilets, path to picnic area, at least one picnic table, and boat dock.

In order to keep the boating access footprint small we intended to use a standard 4' X 8' section of floating dock held in place by one 3" piece of pipe at each end of the dock. There is no way such a dock can be made ADA compliant. The river is approximately 50 feet wide at the northeast corner of the unit, and a larger dock could impede navigation.

It would require a major bank alteration to comply with ADA access down the riverbank (which is currently steeper than 1-to-1 slope) and to the boat dock. In order to utilize a floating dock for boat access it will require a waiver from ADA compliance on the boat dock.

Constructing a parking lot with two pit toilets that are ADA compliant and an ADA compliant trail to a picnic table is no problem. Estimated construction cost is approximately \$238,600. There could be another \$5,000 in road construction costs for the road to the parking lot.

The above costs assume a shoreline day use area located on the northeast corner of the property. Location of a shoreline day use area at another location will increase the costs by the price of ADA compliant trail and/or boardwalk. ADA compliant trail in asphalt is estimated at approximately \$30 sq/ft or \$120 a lineal foot.

If we are able to provide boat access, the following rules will apply.

Car top boats only

Boats must be hand carried and hand launched. No trailers permitted.

Paddle power or electric motors only. No gasoline engines permitted.

When considering a shoreline day use area with boat access we believe the best compromise between full access and no access is limited access. Limiting the number of daily users should reduce the environmental impact on the river and on the neighbors. It is our intention to limit the parking lot to six vehicles and six picnic tables in the shoreline day use area.

It is our intention that this shoreline day use area and boat access be operated on a seasonal basis. We recommend opening on Memorial Day and closing on September 30, annually.

We estimate that a shoreline day use area with boat access will cost approximately \$6200 per season to operate. In order to pay for operating costs we will have to charge a day use fee in the range of \$7 to \$10 dollars per car, per day. That's assuming 6 cars per day every day of the season.

The facility can be operated in two ways. The first way is by reservation, similar to the State Park system. Using this system you guarantee collecting fees and control daily access. The second way is by using an "Iron Ranger" which collects fees on the honor system. Using the Iron Ranger System we would have to have the Shasta County post the section of McArthur Road that runs through the property for NO Parking.

In order to forecast the actual use we have to look at the potential users. Users can be grouped into three classes, picnickers, fisherman and kayakers. Most use by these groups would be on weekends and holidays only. The Cal Trout operation is similar to what we are proposing. They don't have records of their daily use but guesstimate it to be 100 fishermen per month. Local fishing guides put the number at about half that. That level of usage would not cover operating costs.

Outdoor Education Area

We would like to propose an alternative vision for the Fall River Valley Planning Unit as an "Outdoor Education Area". The primary use of the unit would be for scientific and educational purposes. It would allow controlled public access and reduce the human footprint and environmental impact to the property and river.

As suggested in the potential measure for youth program activities, the south portion of the planning unit, which is a Timber Management Unit, can be used for

classes in forestry, plant identification, and wildlife habitat. The north portion of the unit presents educational opportunities in range management, cultural resources and aquatic and terrestrial resources.

The approximately ½ mile of riverbank provides a unique opportunity to study riparian habitat, stream ecology, riverbed morphology, riverbank erosion and ecosystem balance. The north portion, which transitions between wooded upland, wet meadow, and riparian zones provides the opportunity to study these ecotones as well as the transitional zones. The unit also demonstrates the beneficial value of managed grazing to the three different habitats. All of this in one place!

Potential users locally include the Burney/Fall River Unified School District's Science and Agricultural programs, Spring Rivers Foundation educational outreach program (which already serves students from the Burney/Fall River Unified School District, as well as districts in Redding) and Shasta Community College. Moving a little further out we can include College of the Siskiyous, UC Extension and UC Davis.

The Fall River RCD currently partners with the US Department of Agriculture, Agricultural Research Service working through UC Davis. We are developing a partnership with the Watershed Science Center at UC Davis. We anticipate both of these groups utilizing this unit for research projects.

Spring Rivers Foundation has an existing Docent program that can be expanded to include tours of the McArthur Swamp and the Fall River Valley Planning Unit (if we are selected to hold fee title). This will allow us to provide access to other organizations both within the area and outside of the local area. Local garden clubs, Audubon Society and land trusts are just a few examples.

Utilizing the unit as an Outdoor Learning Area will not require a zoning change.

Installing a parking area and an access road can be accomplished without permit as long as the material is placed on top of the ground. The parking area and access road will be constructed of road base and cinder. Portable toilets will be brought in on an as needed basis.

We intend to operate the Outdoor Education Area on a seasonal basis for educational and other groups. In the spring the ground on the unit stays wet, sometimes as late as Memorial Day. Opening of the unit will depend on the condition of the ground. The unit should be able to operate through the end of October, again depending on the weather.

Our science partners would have all year access for scientific studies.

We estimate the operating expenses for an Outdoor Education area to be approximately \$1700 per year. Grazing income is \$500 per year. That leaves a \$1200 deficit.

Shasta Land Trust has agreed in principal to partner with us and hold some of their fund raising “eco tours” on the unit and donate a portion of the proceeds towards our deficit reduction. We believe the same model could be used with other organizations including ourselves.

Our noxious weed coordinator will survey the property for noxious weeds and develop a management plan. The NWC will apply to CDFA for grant monies and do the actual weed control.

We will work with the Pit River Tribe to develop a cultural resource management plan and coordinate with them when conducting cultural resource measures.

It is our intention to honor the existing grazing lease. We will utilize NRCS to develop a rangeland management plan and a grazing plan. We will also utilize NRCS to conduct a biological resource survey.

We will work with a forester and develop a timber management and fuel reduction management plan.

As our Land Conservation Partner, we will work with Spring Rivers Foundation and Spring Rivers Ecological Sciences to develop the appropriate wildlife habitat management plan. Spring Rivers Ecological Sciences are also the prime investigators for the Shasta crayfish an endangered species known from this section of the upper Fall River.

Physical Enhancements/Capital Improvements

Shoreline Day Use Area & Boat Access

We will utilize a Landscape Architect to design Shoreline Day Use Area and Boat access located in northeast corner of property. Architect services will be necessary to design the facility to ADA specifications. Estimated Cost \$12,000.

The Shoreline Day Use area will consist of 6 concrete Forest Service style picnic tables. The area will be connected to the parking lot by a 4' wide ADA compliant path. Estimated cost \$63,600.

The Boat Access will consist of a floating dock to comply with PG&E requirements. It is unknown if the dock can be made ADA compliant and ADA access from the bank to the dock provided. Estimated cost \$3,000 to \$5,000.

The parking lot will be large enough for 6 vehicles and be ADA compliant. The toilets will be adjacent to and accessible from the parking lot. Estimated cost \$150,000.

The access road can be road base and cinder as long as the material can be laid on top of the ground. Entrance to the facility will be through a standard Powder River 14' gate. A 20' long, 15 or 18 inch diameter culvert will be placed in the ditch alongside the road and covered with road base and cinder to connect McArthur Road and the access road. Estimated cost \$4,000.

Outdoor Education Area

We will develop a parking area on high ground on the eastside of the unit. We will cover the area with road base and cinder to make it all weather. The parking area will be connected to McArthur road by a road base and cinder access road. Estimated cost \$8,000.

Entrance to the facility will be through a standard Powder River 14' gate. A 20' long, 15 or 18 inch diameter culvert will be placed in the ditch alongside the road and covered with road base and cinder to connect McArthur Road and the access road. Estimated cost \$1,000.

We will purchase two portable toilets and mount them on a drop axle flat bed trailer. The portable toilet facilities will be brought to the unit on an as needed basis and located at the parking area. Estimated cost \$6,000.

Conclusions/Recommendation

We believe the concept of an "Outdoor Education Area" is the best fit for this planning unit. It is a compromise between access and protection. Admittedly the concept is stronger on protection but the uniqueness of the high bank area demands it.

This property is one of only a few locations (and the most extensive remaining reach) on Fall River with a high bank where the river is shaded, in addition to the riparian species, by intact upland forest vegetation (i.e., mature oaks and pine trees). As such, it provides a type, quality, and complexity of habitat for fish, birds, and other wildlife that is uncommon throughout the rest of Fall River.

This high bank is one of the few locations where natural recruitment of fallen trees can enhance in-stream habitat quality and complexity for fish.

The bank possesses a heron rookery and because it overlooks the river, likely provides important forage perches for eagles and osprey. Unlimited human activity would likely disturb nesting.

The steep banks are erodible and susceptible to damage, which could accelerate erosion rates. The greater the erosion the more sediment deposit in the river. It is human nature to find a way down a steep riverbank to the waters edge. Continued and increased activity of this nature would cause irreparable damage to the high bank.

The economics of providing shoreline day use and boat access would run between \$200,000 and \$250,000 in capital investment. That is for limited daily access that cumulatively over time will be destructive to the environment of the property, the river and the watershed. To use a colloquial expression, "that doesn't pencil out".

The real issue of access on this property revolves around whether public access should be controlled or uncontrolled. Unmonitored public access, while unintentional, will cause irreparable damage to the riparian corridor. Monitored public access will allow public use with minimum impact on the environment.

We recommend that the Fall River Valley Planning Unit be used as an Outdoor Learning Area.

Land Conservation Partners and Youth Opportunities

Spring Rivers Ecological Sciences, LLC

Spring Rivers Foundation is a 501 (c) 3. Spring Rivers routinely partners with the Fall River RCD to conduct educational outreach. Spring Rivers has a full operational Docent program that can be expanded to provide docents for the Fall River Valley and McArthur Swamp units.

By partnering with Spring Rivers Foundation, FRRCD benefits from the extensive scientific background and local experience of its founders, who also own and operate the ecological consulting firm, Spring Rivers Ecological Sciences. They will provide key input, along with other local experts, to create a wildlife habitat management plan and will oversee any activities that could affect the Shasta crayfish.

Post Script

We recognize that the selection of the conservation easement holder is not part of this Request For Proposal. However the Fall River RCD would like to recommend that Shasta Land Trust be awarded the conservation easement for the Fall River Valley Planning Unit.

The Shasta Land Trust holds the conservation easement on the Fall River Ranch, which is adjacent to the Fall River Valley Planning Unit. The Fall River

Ranch holds the grazing lease on the FRVPU. Shasta Land Trust is familiar with both properties.

Additionally, Fall River RCD already has a working relationship with Shasta Land Trust on McArthur Swamp. Extending that relationship to this unit would be a natural fit, and almost certainly streamline coordination efforts and costs.

Pacific Forest and Watershed Lands Stewardship Council
Land Stewardship Budget Plan
Fall River Valley, Outdoor Learning Area

PROJECT BUDGET - BASELINE LAND OWNERSHIP AND MANAGEMENT ACTIVITIES (SEE NOTE 1)

PROJECT REVENUES

Source	Description	Non-SC Funds	Comments
Grant Awards			
Fundraising	eco tours	2,000	
Matching Funds			
Earned Income	Grazing Lease	500	
Other			
To add a row: right click on the row above -> select copy -> right click again -> select insert copied cells			
TOTAL PROJECT REVENUES		- 2,500 - -	

PROJECT EXPENSES

A. Baseline Management Activities

Task	Description	Unit of Measure	Number of Units	Cost/Unit	One-Time Costs	Ongoing Annual Costs	Funding Request		Comments
							One-Time Costs	Ongoing Annual Costs	
Management		hour	24	25	600	618	618	637	
Administrative		hour	8	30	240	247	247	255	
Property Tax		acre	137	0.35	48	49	49	51	
Insurance		year			600	618	618	637	Will Bundle with McArthur Swamp for better price.
Trash		Month	5	50	250	258	258	265	
Reserve		year			-	500	-	515	
Input Activity					-	-	-	-	
Input Activity					-	-	-	-	
Input Activity					-	-	-	-	
Input Activity					-	-	-	-	
Input Activity					-	-	-	-	
Input Activity					-	-	-	-	
Input Activity					-	-	-	-	
Input Activity					-	-	-	-	
Input Activity					-	-	-	-	
Input Activity					-	-	-	-	
To add a row: right click on the row above -> select copy -> right click again -> select insert copied cells									
A. Total Baseline Management Activities					1,738	2,290	1,790	2,359	

B. Other

Task	Description	Unit of Measure	Number of Units	Cost/Unit	One-Time Costs	Ongoing Annual Costs	Funding Request		Comments
							One-Time Costs	Ongoing Annual Costs	
Input Activity					-	-	-	-	
Input Activity					-	-	-	-	
Input Activity					-	-	-	-	
Input Activity					-	-	-	-	
Input Activity					-	-	-	-	
Input Activity					-	-	-	-	
Input Activity					-	-	-	-	
Input Activity					-	-	-	-	
To add a row: right click on the row above -> select copy -> right click again -> select insert copied cells									
B. Total Other					-	-	-	-	

TOTAL PROJECT EXPENSES					1,738	2,290	1,790	2,359	
NET REVENUE/(EXPENSE) - ENHANCEMENT OF BENEFICIAL PUBLIC VALUES					(1,738)	210	(1,790)	(2,359)	

Pacific Forest and Watershed Lands Stewardship Council
Land Stewardship Budget Plan
Fall River Valley, Outdoor Learning Area

Additional Notes:

Note 1: According to the Stewardship Council's Land Conservation Program Funding Policy, the Stewardship Council will require future land owners to demonstrate that they have the funding and other capacity to maintain that property interest so as to preserve and/or enhance the beneficial values on the Watershed Lands. Exceptions to this guideline will be rare and considered only in circumstances where,

- 1) The funding of baseline land ownership and management activities will clearly lead to enhancement of the beneficial public values on the lands; and/or,
- 2) The funding of baseline land ownership and management activities is only temporary (≤5 years).

PROJECT BUDGET - BASELINE LAND OWNERSHIP AND MANAGEMENT ACTIVITIES (SEE NOTE 1)

PROJECT REVENUES

Source	Description	Non-SC Funds				Comments
Grant Awards						
Fundraising						
Matching Funds						
Earned Income	Grazing Lease		500			
Other	User Fees		6,000			
To add a row, right click on the row above -> select copy -> right click again ->select insert copied cells						
TOTAL PROJECT REVENUES		-	6,500	-	-	

PROJECT EXPENSES

A. Baseline Management Activities

Baseline Management Activities									
Task	Description	Unit of Measure	Number of Units	Cost/Unit	One-Time Costs	Ongoing Annual Costs	Funding Request		Comments
							One-Time Costs	Ongoing Annual Costs	
Management	manager	hour	120	25	3,000	3,090	3,090	3,183	
Administrative		hour	8	30	240	247	247	255	
Property Tax		acre/year	137	0.35	48	49	49	51	
Maintenance		year		500	-	500	-	515	
Trash		month	5	40	200	206	206	212	
Toilets	supplies/cleaning	year			-	1,100	-	1,133	
Reserve	unforeseen circumstances	year			-	500	-	515	
Input Activity					-	-	-	-	
Input Activity					-	-	-	-	
Input Activity					-	-	-	-	
Input Activity					-	-	-	-	
Input Activity					-	-	-	-	
Input Activity					-	-	-	-	
Input Activity					-	-	-	-	
Input Activity					-	-	-	-	
Input Activity					-	-	-	-	
To add a row: right click on the row above -> select copy -> right click again -> select insert copied cells									
A. Total Baseline Management Activities					3,488	5,693	3,593	5,863	

B. Other

Task	Description	Unit of Measure	Number of Units	Cost/Unit	One-Time Costs	Ongoing Annual Costs	One-Time Costs	Ongoing Annual Costs	Comments
Input Activity					-	-	-	-	
Input Activity					-	-	-	-	
Input Activity					-	-	-	-	
Input Activity					-	-	-	-	
Input Activity					-	-	-	-	
Input Activity					-	-	-	-	
Input Activity					-	-	-	-	
Input Activity					-	-	-	-	
To add a row: right click on the row above -> select copy -> right click again -> select insert copied cells									
B. Total Other					-	-	-	-	

TOTAL PROJECT EXPENSES	3,488	5,693	3,593	5,863
NET REVENUE/(EXPENSE) - ENHANCEMENT OF BENEFICIAL PUBLIC VALUES	(3,488)	807	(3,593)	(5,863)

Pacific Forest and Watershed Lands Stewardship Council
Land Stewardship Budget Plan
Fall River Valley, Shoreline Day Use/Boat Access Version

Additional Notes:

Note 1: According to the Stewardship Council's Land Conservation Program Funding Policy, the Stewardship Council will require future land owners to demonstrate that they have the funding and other capacity to maintain that property interest so as to preserve and/or enhance the beneficial values on the Watershed Lands. Exceptions to this guideline will be rare and considered only in circumstances where,

- 1) The funding of baseline land ownership and management activities will clearly lead to enhancement of the beneficial public values on the lands; and/or,
- 2) The funding of baseline land ownership and management activities is only temporary (≤5 years).

Bill Buckman, President Fall River RCD

Occupation/Years of Experience

Bill has been a rancher and farmer for 34 years. Bill has been a partner in the Beaver Creek Ranch for the last 20 years.

Education

Completed High School and 1.5 years of college

Volunteer Activities

Fall River Resource Conservation District Board Member for 9 years
Currently on the Lassen County Resource Advisory Committee (RAC)
Past President of the Fall River/Big Valley Cattlemen's Association

Pete Johnson, Vice President Fall River RCD

Occupation/Years of Experience

Forester for 28 years. Currently employed by W.M. Beaty & Associates, District Forester, since 1989.

Education

Bachelor of Science Degree Received in 1977-Forest Resource Management, Humboldt State University

Volunteer Activities

Fall River Resource Conservation District Board Member for 3 years, 3 months and Associate Director for 1 year.
Member California Association Resource Conservation Districts Forestry Committee

Professional Affiliations and Activities

Registered Professional Forester RPF#2384
Member of NorCal Society of American Foresters since 1982 (Secretary 2003-2004)

Rod McArthur, Director Fall River RCD

Occupation/Years of Experience

Farmer and Rancher for 40 years. Member of the founding family of the town of McArthur, California.

Education

High School and Junior College

Volunteer Activities

Member McArthur Volunteer Fire Department 36 years
Fall River Resource Conservation District Board Member 5 years
Board member North East California Water Association 10 years

Don McBroome, Director Fall River RCD

Occupation/Years of Experience

Don is born and raised in Shasta County and is currently retired. Don spent 12 years in the U.S. Air Force. Don worked 32 years for Shasta County Dept. of Agriculture, as an Agriculture & Standards-Investigator III.

Education

Obtained 3 AA Degrees from Shasta College: General Education, Ornamental Horticulture, and Agriculture

Volunteer Activities

Fall River Resource Conservation District, Board Member for 5 years

Mike Millington, Director Fall River RCD

Occupation/Years of Experience

Currently retired. 20 years spent in law enforcement, 10 years in supervision. 15 years agriculture/farming experience.

Education

High School and 90 Units Law enforcement and business management

Volunteer Activities

Fall River Resource Conservation District Board Member 1 year

Associate Director, Fall River Resource Conservation District—9 months

Pat Oilar, Director Fall River RCD

Occupation/Years of Experience

Farmer and rancher for 28 years. Owns and operates Oilar's Agricultural Service which farms on a crop share basis and trucking service. Member of the pioneer Oilar Family of the Fall River Valley.

Education

High School Graduate

Volunteer Activities

Fire Chief McArthur Volunteer Fire Department for 12 years

Former Fall River School District Board member

Fall River Resource Conservation District Board Member 2 years

USDAFHA Board member 4 years

Tom Smith, Director Fall River RCD

Occupation/Years of Experience

Owner Tom Smith Tile Company for 28 years.

Education

High School, 3 years College

Volunteer Activities

Fall River Resource Conservation District Board Member 14 years

Board member Fall River Wild Trout 10 years

Avid Fly fisherman and Conservationist

Patty Betz, Administrative Assistant Fall River RCD

Occupation/Years of Experience

Administrative Assistant Fall River RCD 3 years

Food Service Manager, Mayers Memorial Hospital 10 years

Food Service Director, Eldorado County 5 years

Education

AA Degree General Arts

AA Degree Dietician Technician

BA management

Kelly Shuler, Noxious Weed Coordinator Fall River RCD

Occupation/Years of Experience

Noxious weed coordinator Fall River RCD 3 years

Substitute teacher 20 years

Education

BS Range Management

Master Gardener in California and Oregon

Professional Licenses

Herbicide Applicators License

Volunteer Activities

Shasta County Election Board

Wayside Garden Club, Fall River

Todd Sloat, Watershed Coordinator Fall River RCD

Occupation/Years of Experience

Watershed Coordinator Fall River RCD 3 years

Coordinator Pit River Watershed Alliance 10 years

Education

BS Wildlife & Fisheries Biology

MS Ecology

Volunteer Activities

Varsity Football Coach Fall River High School 3 years

Fall River Resource Conservation District

Post Office Box 83
McArthur, CA 96056



Telephone/Fax: (530) 336-6591/336-5618
e-mail fallrivercd@citlink.net

8-03-2010

To: The Stewardship Council

The Fall River Resource Conservation District Board of Directors read and discussed the "Proposal for the Fall River Valley Planning Unit" during the July 15, 2010 Financial Board Meeting. The Board unanimously decided to accept the land stewardship proposal. As President of the Board of Directors of the Fall River Resource Conservation District, I approve the submission of the proposal for the Fall River Valley Planning Unit. The Fall River Resource Conservation District agrees to participate in the Stewardship Council's land conservation process for the Fall River Valley Planning Unit.

Bill Buckman, President of the Board
Fall River Resource Conservation District

Spring Rivers FOUNDATION

Post Office Box 143
Cassel, California 96016
(530) 335-5446

August 10, 2010

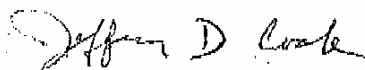
Michael Millington, Director
Fall River Resource Conservation District
PO Box 83
McArthur, CA 96056

Dear Mr. Millington,

The purpose of this letter is to declare Spring Rivers Foundation's intent to join the Fall River Resource Conservation District as a Land Conservation Partner in their proposal to take fee title of the parcel surrounding the Gas Pipeline crossing of Fall River within the Fall River Valley Planning Unit. Spring Rivers Foundation is a 501(c)(3), taxpayer ID: 20-1778247.

Spring Rivers Foundation routinely partners with the Fall River RCD to conduct educational outreach. We have toured the property and recognize several opportunities for outdoor education/outreach. This parcel of land includes one of the few examples of high, forested bank along the entire Fall River, so it provides important habitat qualities, including structure and complexity, not found in most of Fall River. In addition to the mixed oak/ponderosa pine woodland (which appears remnant of pre-European development), this parcel includes wet meadow and riparian zones, and offers opportunities to study all of these habitats as well as the transition zones between them.

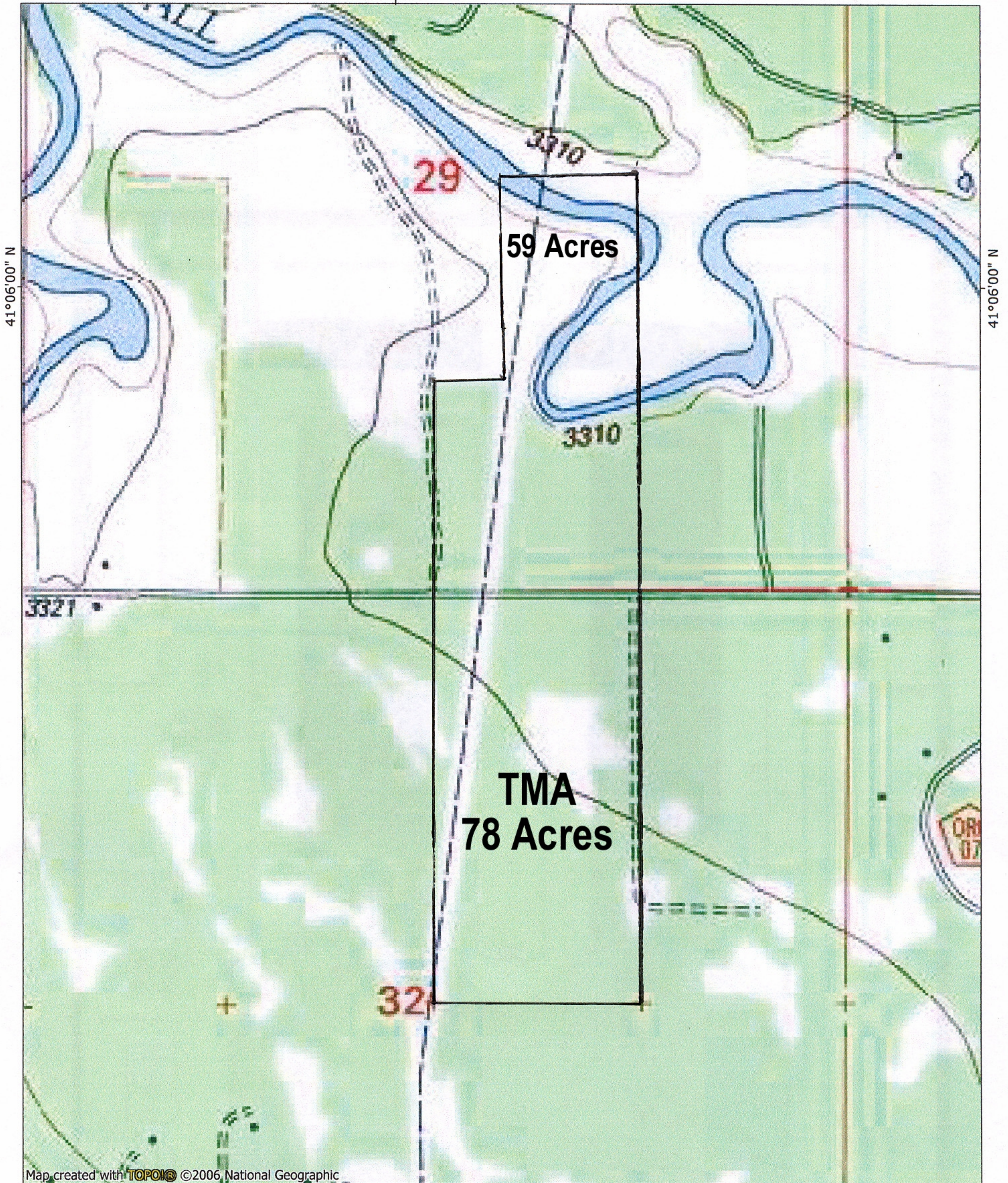
Sincerely,



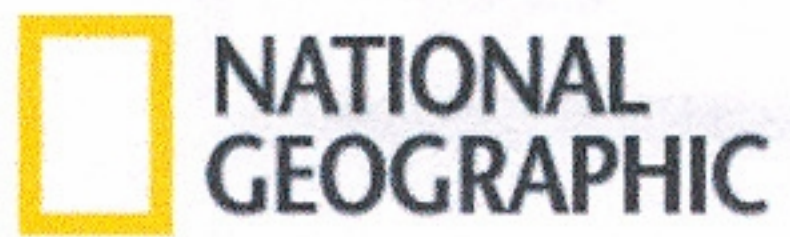
Jeffrey D. Cook
President

FRVPU

TOPO! map printed on 07/08/10 from "Untitled.tpo"
NAD27 121°32'00" W

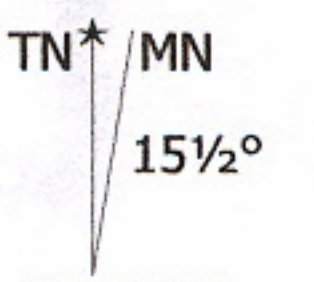


Map created with TOPO! ©2006 National Geographic



NAD27 121°32'00" W

0.00 0.05 0.10 0.15 0.20 0.25 0.30 miles
0.0 0.1 0.2 0.3 0.4 0.5 km





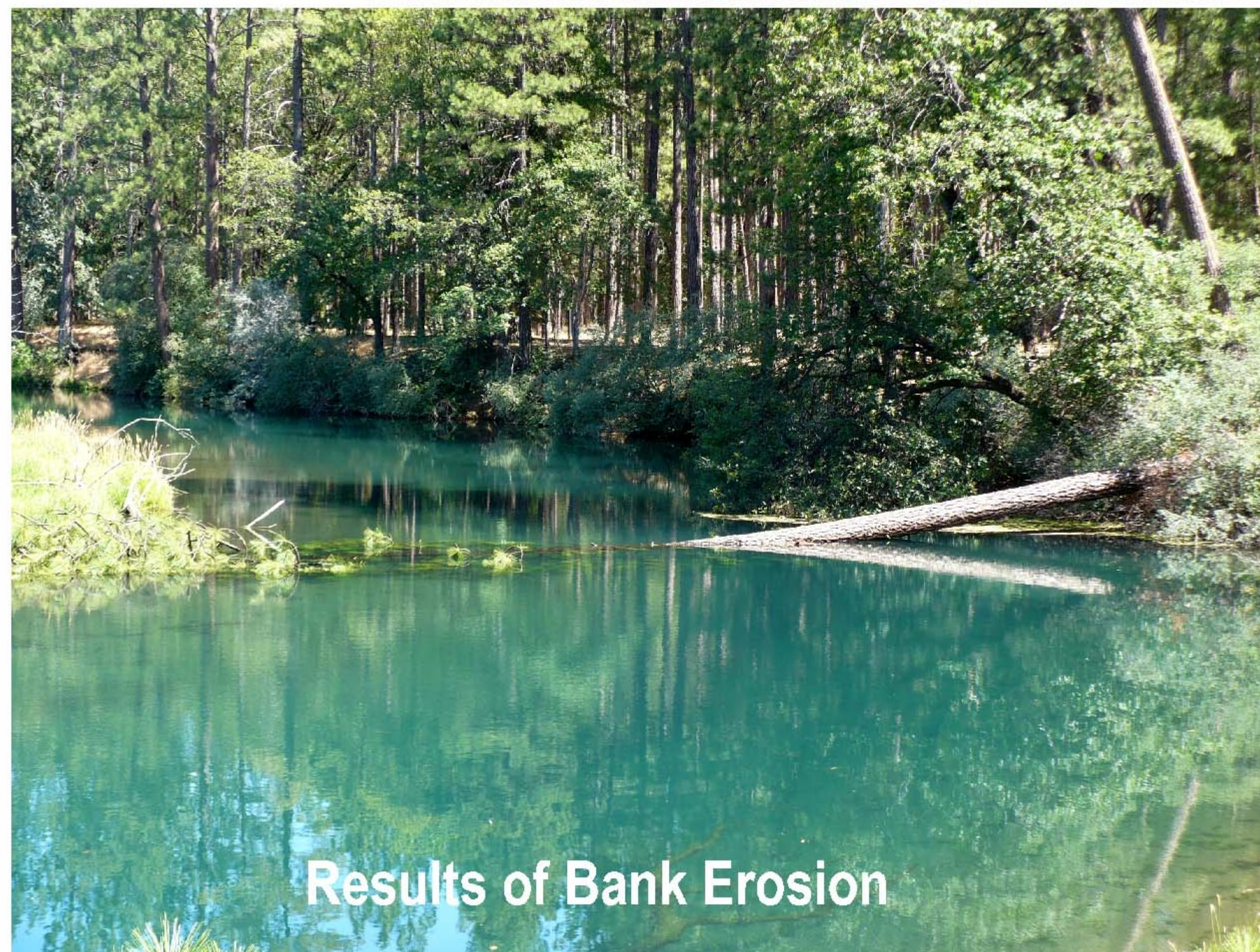
Cattle Ramp



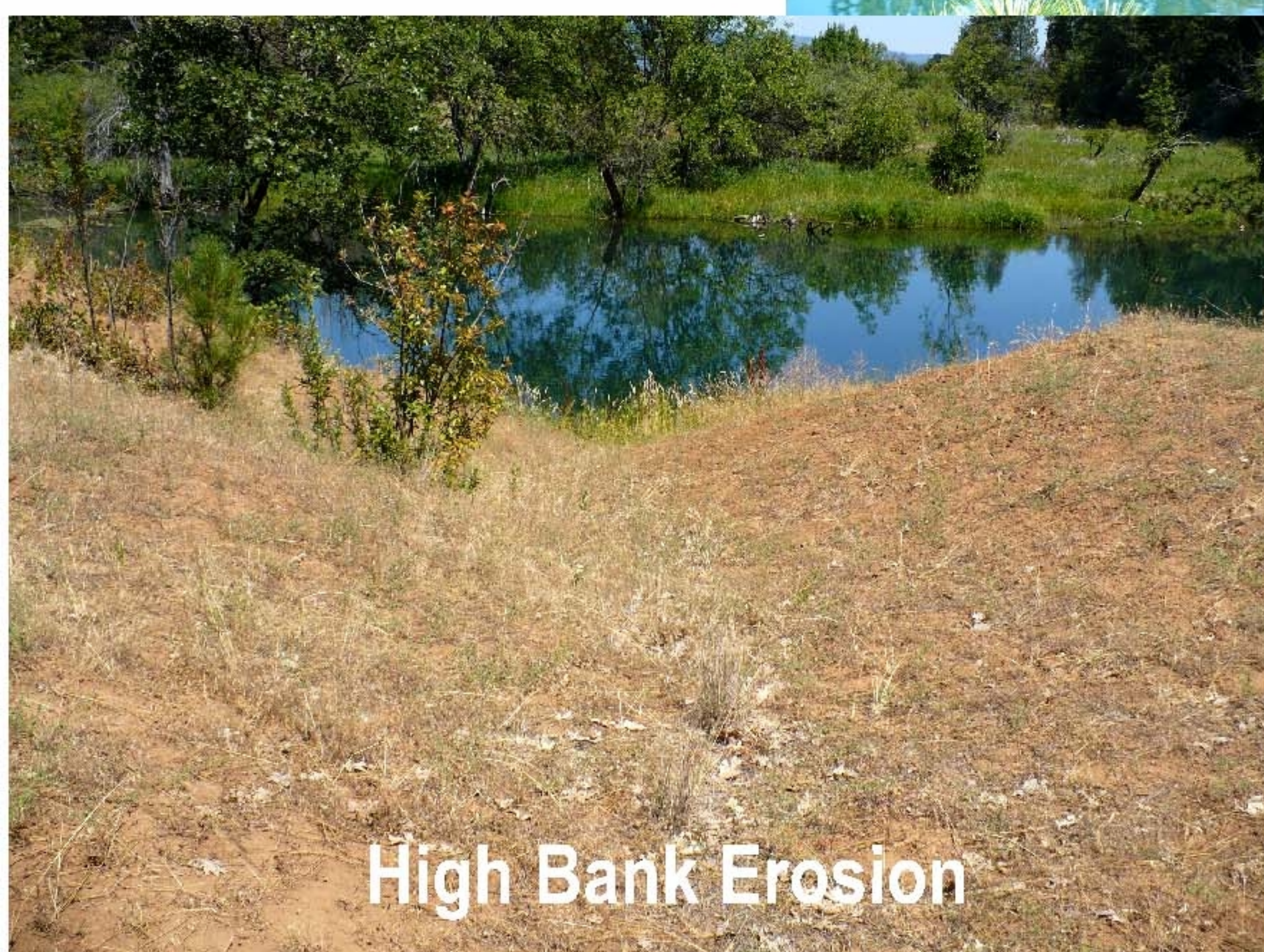
Cattle Ramp



Spring Creek Bridge



Results of Bank Erosion



High Bank Erosion